

# Welcome to Carritech

---

All of your legacy network support services in one place.



Supporting your network to sustain our future.





# Welcome to Carritech

---

Founded in 2010, Carritech has been a trusted partner in the telecommunications industry, providing high-quality equipment and expert support to businesses worldwide. We specialise in extending the life of telecom networks, helping companies reduce costs, minimise downtime, and maintain seamless connectivity.

At the heart of our mission is sustainability. By prolonging the lifespan of legacy telecom equipment, we help businesses reduce e-waste, lower their carbon footprint, and contribute to a more sustainable future. Rather than replacing entire systems, we offer cost-effective solutions that maximise existing infrastructure, minimising environmental impact while maintaining network efficiency.

Whether you need legacy equipment, repairs, technical support, or bespoke solutions, Carritech is here to help. Discover how we can support your network while driving sustainability forward.

## Who we are

---

At Carritech, we are a globally connected team dedicated to delivering expert telecommunications solutions. With offices in the UK and Spain, we serve businesses worldwide, providing high-quality telecom equipment, repairs, and support services.

Our team is made up of multilingual professionals from a diverse range of countries, allowing us to support customers across different regions with efficiency and expertise. We understand the challenges businesses face in maintaining telecom infrastructure, and our specialists are committed to providing tailored solutions that keep networks running smoothly while reducing costs and environmental impact.

With a strong focus on sustainability and innovation, Carritech is your trusted partner in extending the life of telecom networks, ensuring reliable connectivity without unnecessary replacements.

**Wherever you are in the world, our team is ready to support you.**

# Our Products & Solutions

---

At Carritech, we offer a comprehensive range of telecommunications products and services, backed by our deep industry expertise. With years of experience and a team of highly skilled professionals, we help businesses maintain, upgrade, and extend the life of their networks. Our knowledge spans across multiple technologies and manufacturers, enabling us to provide tailored solutions that reduce costs, minimise downtime, and support long-term network sustainability.

**We proudly provide all of your essential network support services in one place.**

## Our People

---



At Carritech, our global team ensures seamless support wherever our clients are. With multilingual staff across different regions, we provide clear communication and expert assistance in multiple time zones. Committed to excellence, our team offers fast, reliable service, making us more than just a supplier—we're a trusted partner in your success.



Carritech provides all of your essential legacy network support services in one place.



### **Part Supply**

Carritech supplies high-quality telecommunications parts from leading global manufacturers. From optical transceivers and routers to switches, power supplies, and base station components, we cover both current and legacy technologies. With a vast inventory and fast turnaround, we help keep your network running smoothly and cost-effectively.



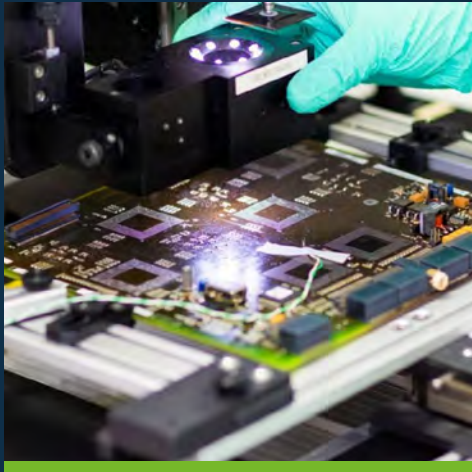
### **Deinstallation**

Our deinstallation services are designed to safely and efficiently remove network equipment from live or decommissioned environments. Carritech's experienced engineers handle everything from individual rack removals to large-scale site clearances, ensuring minimal disruption to operations while maximising equipment recovery value.



### **Asset Management**

Gain complete visibility and control over your telecoms infrastructure with Carritech's asset management solutions. We help you track, evaluate, and optimise the use of your hardware—whether it's in operation, in storage, or marked for resale or recycling. With secure storage, auditing, and reporting, we bring clarity and strategic value to your asset lifecycle.



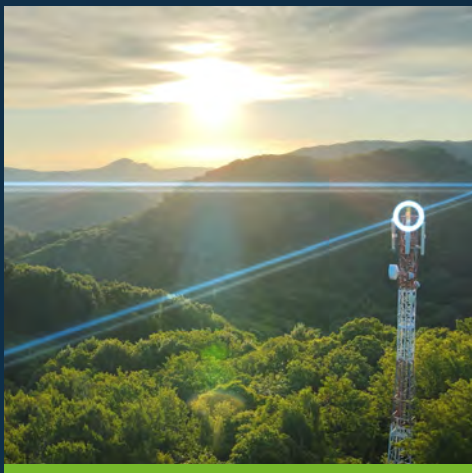
### **Repair & Refurbishment**

Extend the life of your network hardware and reduce capital expenditure with Carritech's professional repair and refurbishment services. Our in-house engineers and trusted partners diagnose, restore, and rigorously test equipment to manufacturer standards. We help customers reduce waste and achieve cost-efficient network resilience through sustainable hardware management.



### **Network Support Services**

Carritech provides tailored network support services to suit the evolving needs of telecom operators and service providers. From on-demand technical assistance to long-term maintenance agreements, our team delivers expert guidance and hands-on support to maintain uptime and enhance operational efficiency across your network infrastructure.



### **Recycling**

Sustainability is at the core of what we do. Our certified recycling services ensure end-of-life telecoms equipment is processed responsibly, in line with environmental and regulatory standards. We work with trusted recycling partners to minimise landfill and recover valuable materials—helping you meet your environmental goals while maintaining data security.

# And that's not all...

And that's not all. Alongside our network support services, Carritech has launched a dedicated optics division — Carritech Optics — focused on supplying a wide range of high-quality optical products to meet the growing demands of modern networks.

The Carritech Optics portfolio includes:



155M/1.25G SFP



10G SFP+/XFP



Direct Attached Cable (DAC)



Active Optical Cable (AOC)



16G/25G/32G



40G QSFP+/100G QSFP28



Patch Cords



Copper SFP & Adapters



100G CFP/CFP2/CFP4



200G/400G QSFP-DD  
800G OSFP



Media Converters



Coding Box

For more information on our optics range, please visit:

[optics.carritech.com](https://optics.carritech.com)





## We are driven by excellence

---

At Carritech, our global team ensures seamless support wherever our clients are. With multilingual staff across different regions, we provide clear communication and expert assistance in multiple time zones. Committed to excellence, our team offers fast, reliable service, making us more than just a supplier—we're a trusted partner in your success.

At Carritech, our management and staff are driven by our professional, ethical and sustainable business practices and are proud to have our efforts recognised by some of the industry's leading accreditation bodies.


### **We are fully ISO 9001:2015 & ISO 14001:2015 accredited.**

At Carritech are proud to have our quality management systems and environmental practices certified by Alcumus ISOQAR Limited as being ISO 9001:2015 and 14001:2015 compliant.

These accreditations evidence the continual efforts of our staff and management teams, who are determined to provide the very best service to every customer, through organised, methodical and ethical processes that are environmentally sustainable.



# Sustainability

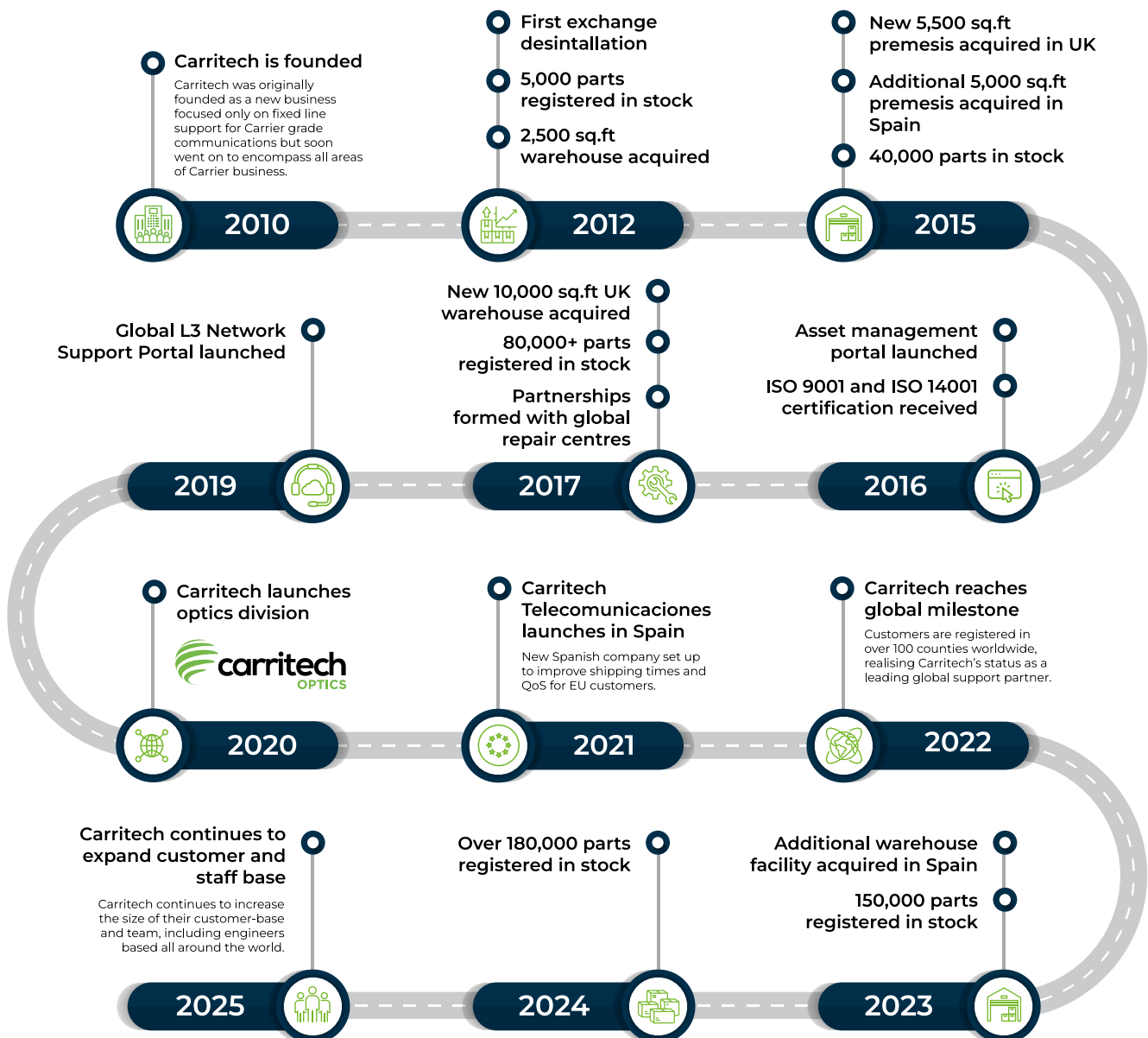


At Carritech, sustainability is at the core of our business. By reselling, repairing, and renewing telecoms equipment, we extend the life cycle of vital technology, preventing unnecessary waste and reducing the amount of equipment sent to landfill. Our approach not only supports a more sustainable future but also provides businesses with cost-effective solutions by keeping high-quality

telecoms hardware in operation for longer. Additionally, we offer expert support for equipment that is no longer maintained by the OEM, ensuring continued functionality and reliability. Through our commitment to reuse and long-term support, we help our customers reduce their environmental impact while maximising the value of their telecoms infrastructure.

# Our story so far...

Carritech was founded in 2010 by Bruce Sutherland and Miguel Asin, bringing together decades of telecoms experience and a shared vision to support global network operators with high-quality, carrier-grade equipment. Their journey's began in the 80's as telephone engineer, later building successful businesses focused on installation, maintenance, and the resale of used telecoms systems. Carritech started from humble beginnings—stock stored in garages and a barn—but quickly grew into a trusted partner for operators worldwide. Today, with over 180,000 parts in stock and customers in more than 100 countries, we continue to expand our services across asset management, repairs, network support, and optical technologies.











Get in touch  
with us today.

[carritech.com/contact/](https://carritech.com/contact/)



Supporting your network  
to sustain our future.

